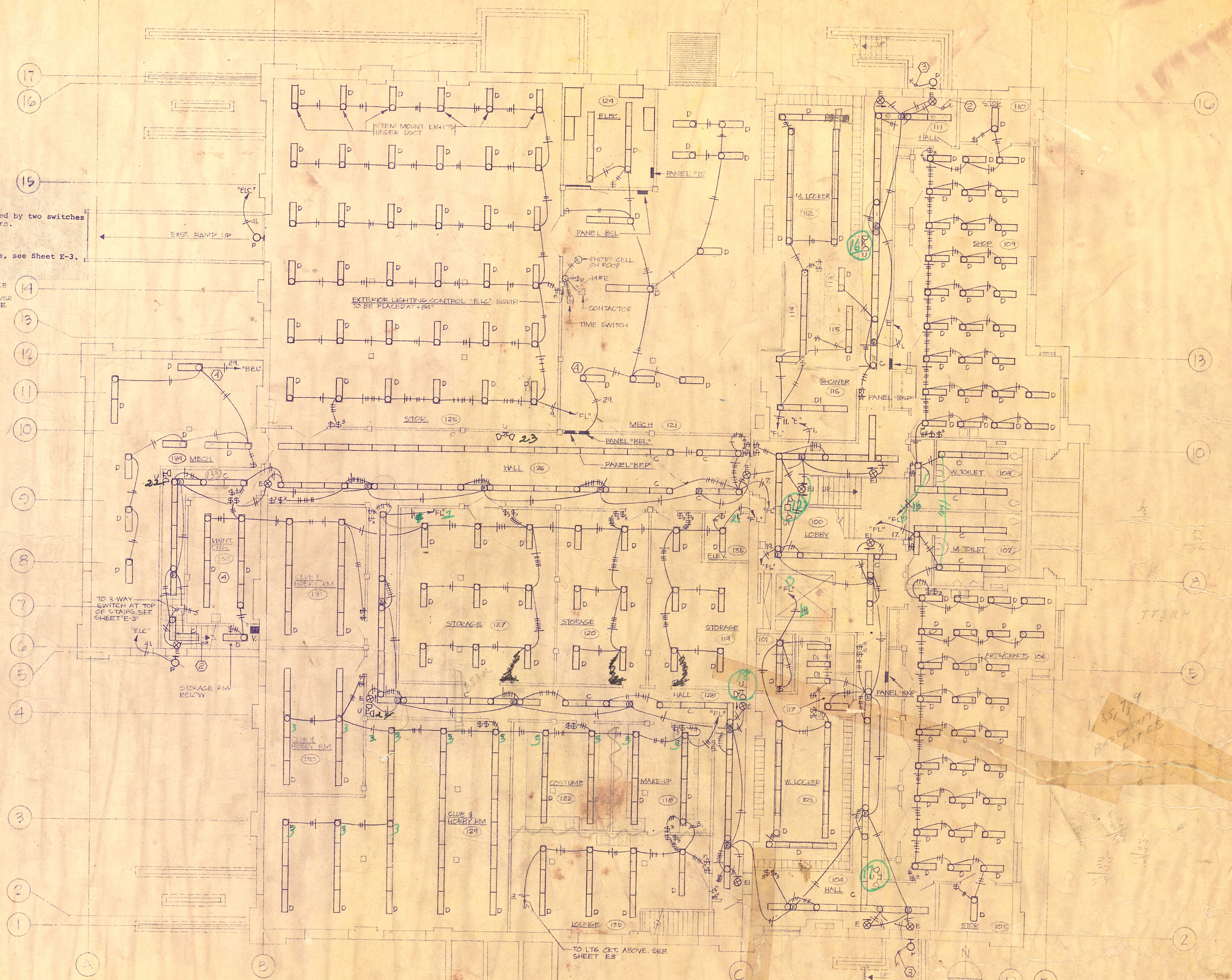


NOTES SHEET E-2

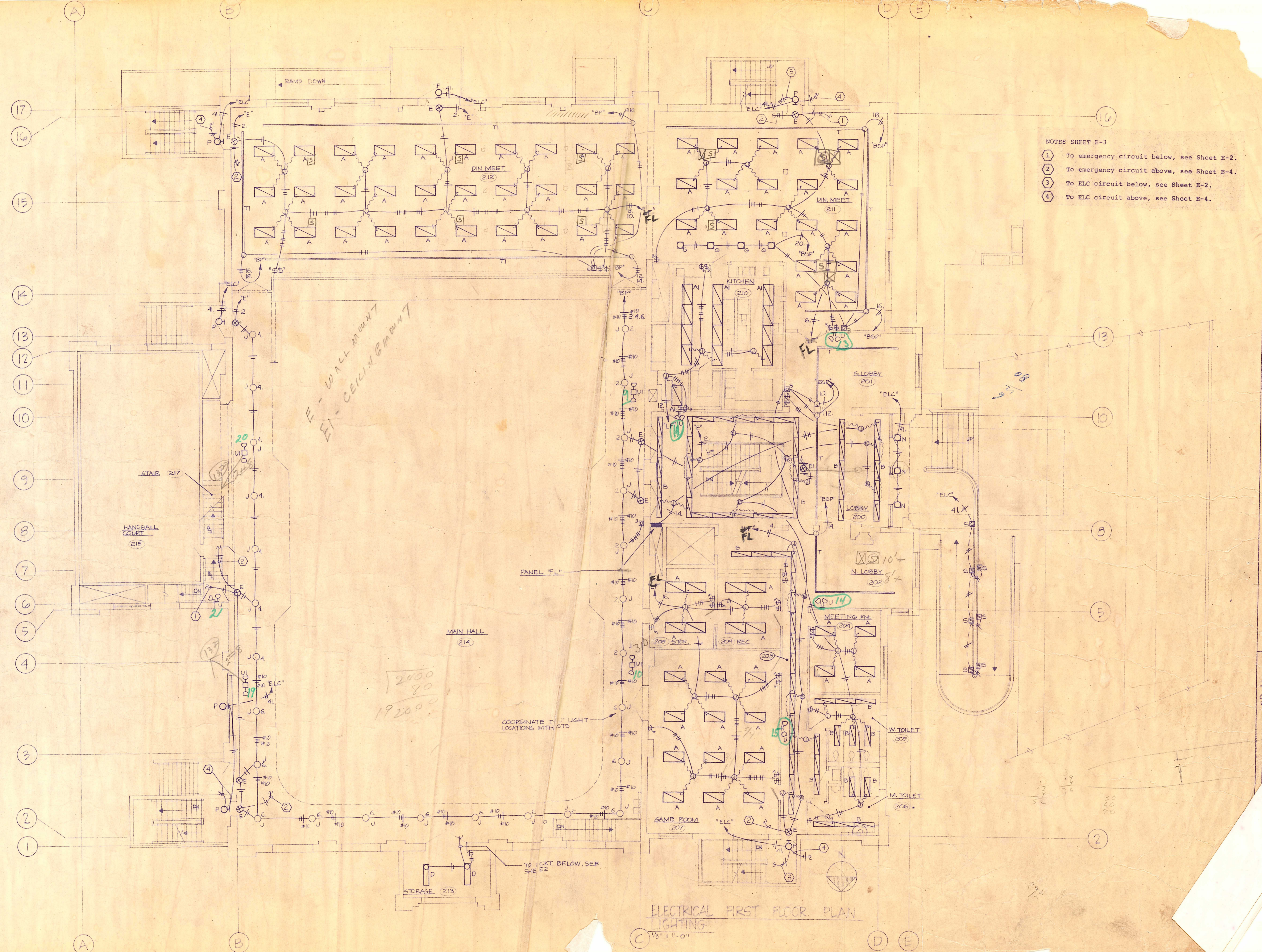
- 1 Where possible, lights in a room controlled by two switches shall be switched in a checkerboard pattern.
- 2 To emergency circuit above, see Sheet E-3.
- 3 To exterior lighting control circuit above, see Sheet E-3.
- 4 TYPE 'U' LIGHTS IN ROOMS 121, 125, & 131 TO BE SURFACE MOUNT, OR SUSPENDED TO 14" IF SURFACE MOUNTING IS NOT PRACTICAL OR IF CEILING IS OVER 14". VERIFY CEILING CONDITIONS & COORDINATE LOCATIONS OF LIGHTS WITH MECH. CONTRACTOR.
- 5 TYPE 'E' & 'U' LIGHTS ON THIS SHEET TO BE 24" TO TOP OF FIXTURE, UNLESS OTHERWISE NOTED.



ELECTRICAL BASEMENT FLOOR PLAN
1/8" = 1'-0"

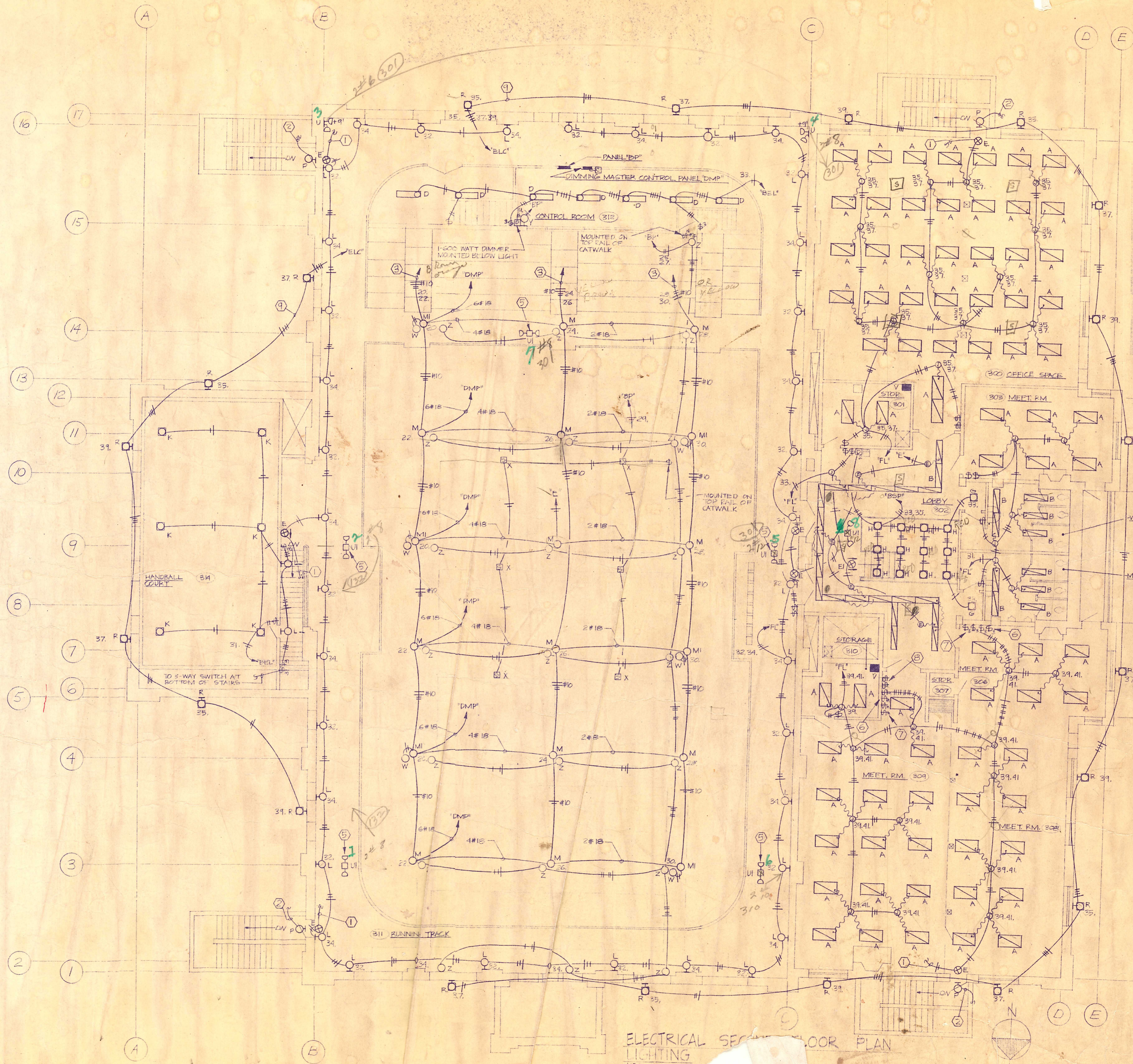
35479
BASE CONTRACT
4-17-65

- NOTES SHEET E-3
- ① To emergency circuit below, see Sheet E-2.
 - ② To emergency circuit above, see Sheet E-4.
 - ③ To ELC circuit below, see Sheet E-2.
 - ④ To ELC circuit above, see Sheet E-4.



ELECTRICAL FIRST FLOOR PLAN LIGHTING
1/8" = 1'-0"

REGISTERED ARCHITECT
REGISTERED ELECTRICAL ENGINEER
JAMES H. HARRIS
1000 ...



- ① To emergency circuit below, see Sheet E3.
- ② To exterior lighting circuit below, see Sheet E3.
- ③ To Panel "FL" via lighting contactor, see H.I.D. dimming control diagram
- ④ See mounting detail, Sheet E9, for all type "M", "M1", & "W" lights.
- ⑤ MOUNT LIGHTING HEADS ON TOP OF TRUSS CHORD HEADS ALONG GRID LINE "A" MOUNT ON SIDE OF CHORD
- ⑥ These two switches control lights in Room #308.
- ⑦ These two switches control lights in Room #306.
- ⑧ These two switches control lights in Room #309.
- ⑨ CONDUIT FOR TYPE "R" LIGHTS TO BE ROUTED CONCEALED BEHIND STUCCO PANELS.

ELECTRICAL SECOND FLOOR PLAN
LIGHTING
1/8" = 1'-0"



208/4000

BEP
25
27
29
31
33
37

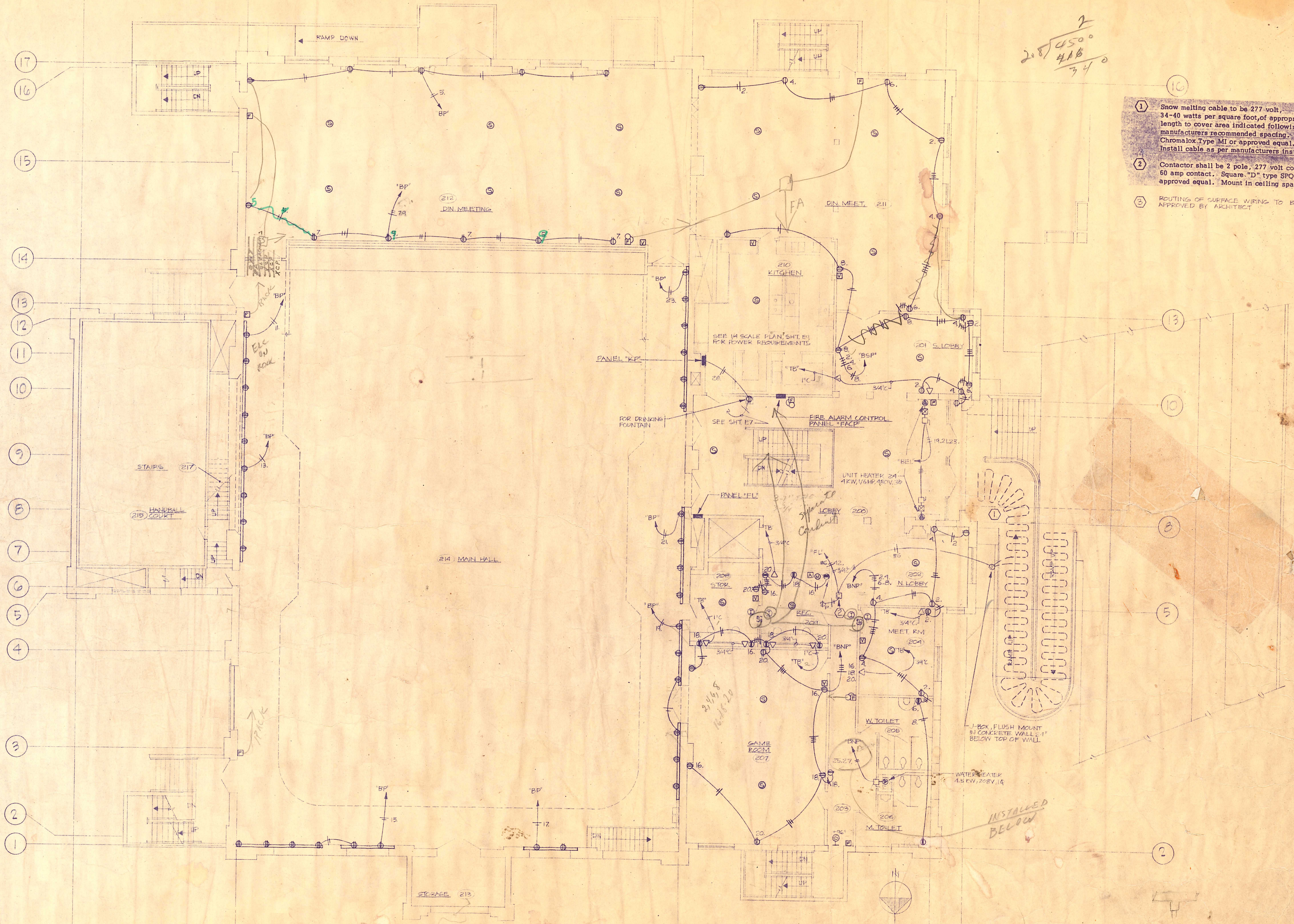
NOTES:
① J-BOX W/BLANK COVER PLATE FOR FUTURE USE

ELECTRICAL BASEMENT FLOOR PLAN
POWER & SIGNAL
1/8" = 1'-0"



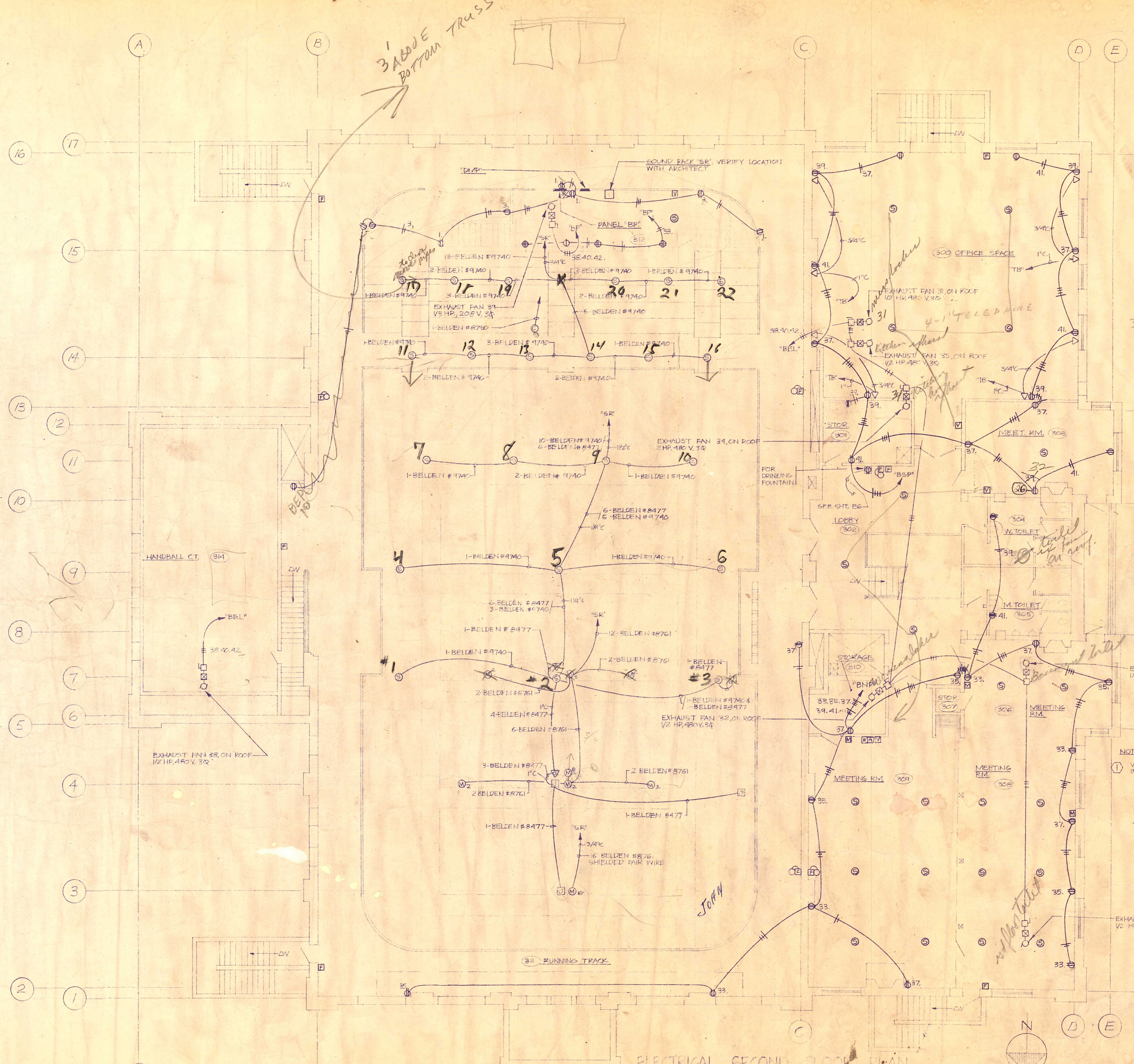
28 4500
416
340

- ① Snow melting cable to be 277 volt, 34-40 watts per square foot, of appropriate length to cover area indicated following manufacturers recommended spacing. Chromalox Type MI or approved equal. Install cable as per manufacturers instructions.
- ② Contactor shall be 2 pole, 277 volt control, 60 amp contact. Square "D" type SFC-1 or approved equal. Mount in ceiling space.
- ③ ROUTING OF SURFACE WIRING TO BE APPROVED BY ARCHITECT



ELECTRICAL FIRST FLOOR PLAN
POWER & SIGNAL
1/2" = 1'-0"

John A. Ambrose



3 AWG
BOTTOM TRASS

9740 - .220 2 COND
8761 - .171 2 COND
8762 - .196 2 COND
8774 - .450 18 COND

37
39
41

31 + 32

NOTES:
1 VERIFY MAINTING OF ALL SOUND SYSTEM DEVICES IN ROOM # 214 WITH ARCHITECT

33
35
39

ELECTRICAL SECOND FLOOR PLAN
POWER & SIGNAL
1/8" = 1'-0"

RESISTANCE ARCHITECT
McMINNVILLE
McMINNVILLE