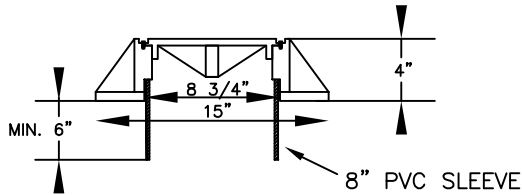
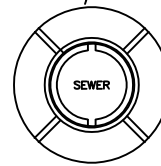


OLYMPIC FOUNDRY, INC.  
OR EQUAL CASTING  
LOCKING CLEANOUT  
FRAME & COVER

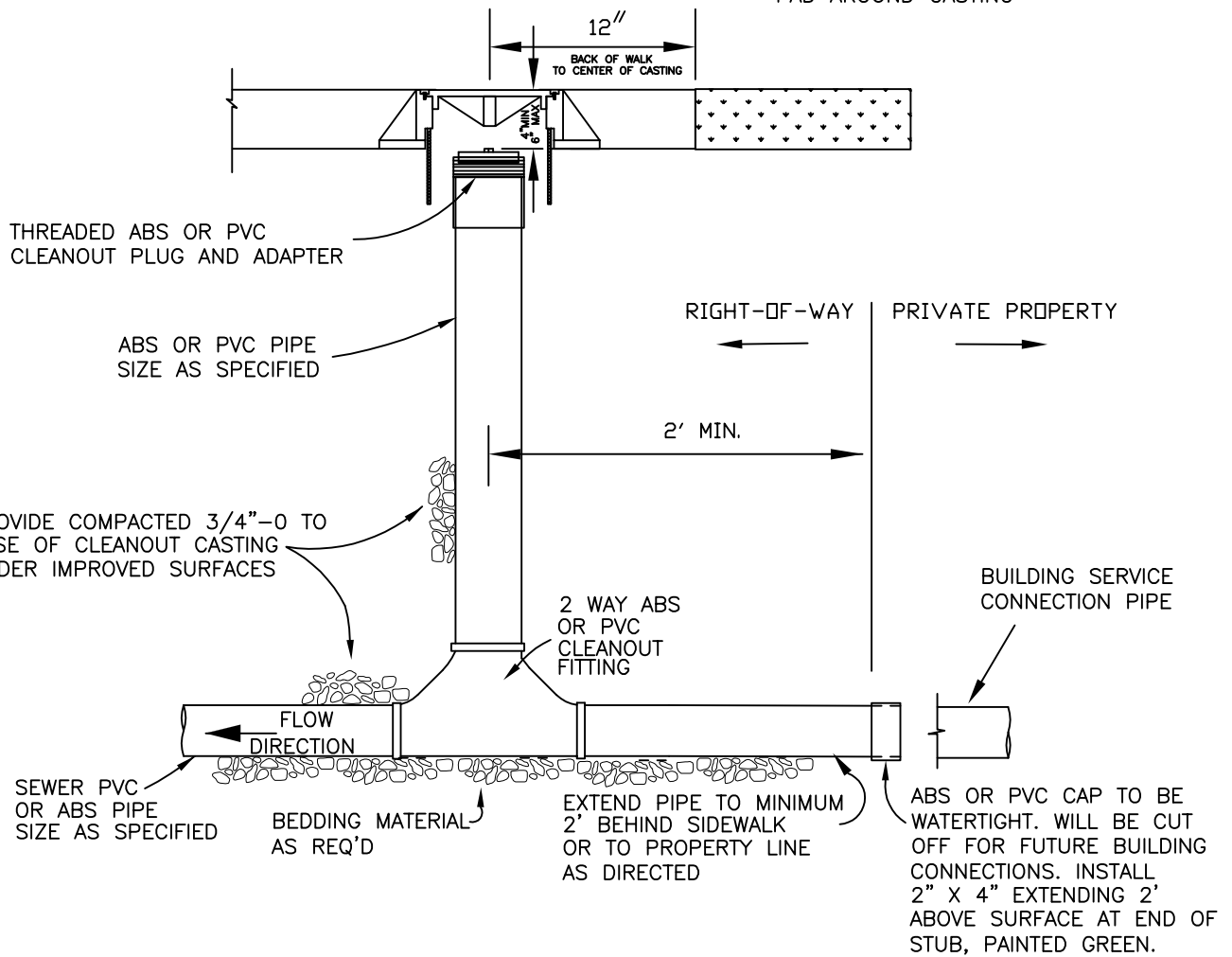
CLEANOUT  
(PIPE SIZE)

4"	M1007 D/T
6"	M1007 D/T

APPROVED CAST IRON FRAME  
AND COVER SHALL BE LABELED  
"SEWER" OR "CLEANOUT"



IF NO SIDEWALK IS PRESENT  
INSTALL CLEANOUT AT CITY DIRECTION  
AND POUR 18" X 18" CONCRETE  
PAD AROUND CASTING



**City of  
McMinnville**

**DETAIL FOR  
PROPERTY LINE CLEANOUT**

DATE:  
AUG 2023

DRAWING NO.  
**22a**