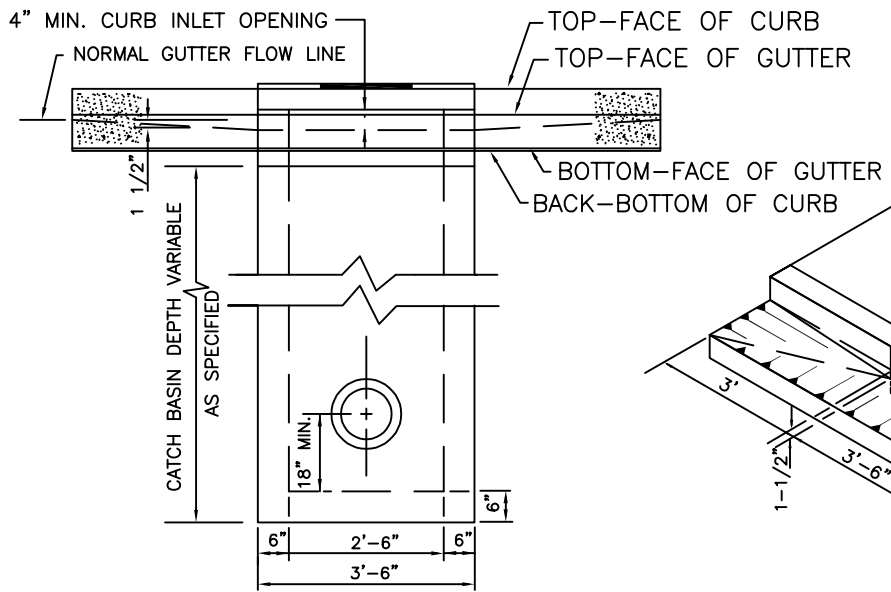


PLAN VIEW

SECTION A-A



FRONT VIEW

PERSPECTIVE VIEW SHOWING DEPRESSED GUTTER AT CURB INLET

NOTES:

- 1) ALL FABRICATED METAL PARTS SHALL BE HOT-DIPPED GALVANIZED AFTER FABRICATION.
- 2) CONCRETE SHALL HAVE A 28 DAY ULTIMATE COMPRESSIVE STRENGTH OF 3300 PSI.
- 3) FOR STEEP GRADES USE STD. PRECAST INLET WITH 4' OPENING OR TWO 2'-6" OPENING INLETS.
- 4) PRECAST CURB INLET IS PATTERNED AFTER WALT'S CONCRETE, SPRINGFIELD, OR. CONCRETE CURB INLET PAT. NO. 4000953.

**City of
McMinnville**

**DETAIL FOR
GUTTER INLET**

DATE: AUGUST 2022	DRAWING NO. 12
----------------------	--------------------------